

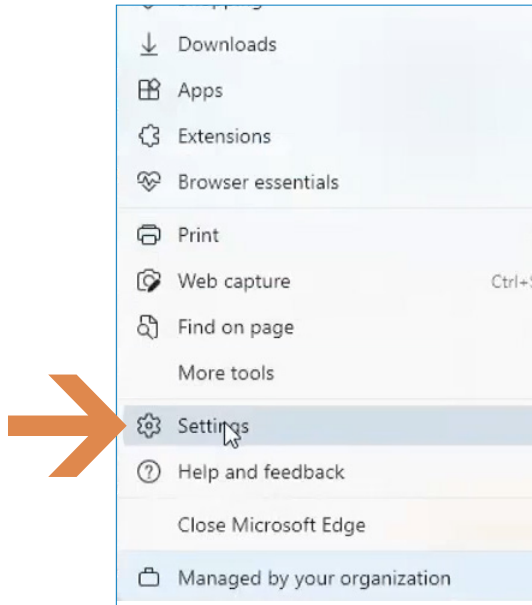


➔ HOW DO I: SET MY MICROSOFT EDGE BROWSER SETTINGS – SBS FOR ORGANIZATIONS?

Using the recommended browser settings with SBS will greatly improve the user experience. The two browsers most commonly used by SBS users are Google Chrome and Microsoft Edge.

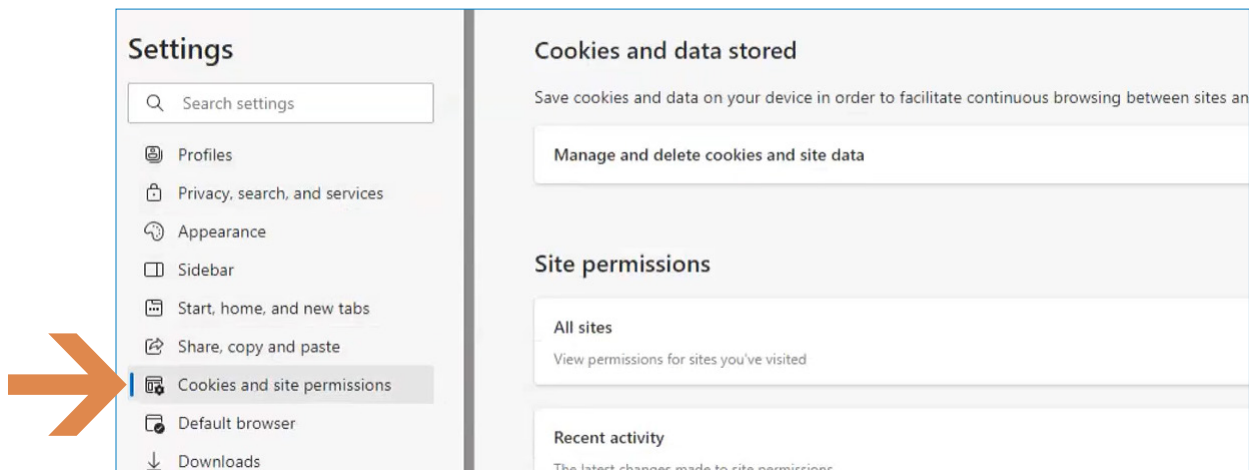
1 Microsoft Edge Browser Settings

From the Microsoft Edge tab, select Settings.



2 Site Permissions

Under the Setting sidebar, select Cookies and site permissions.

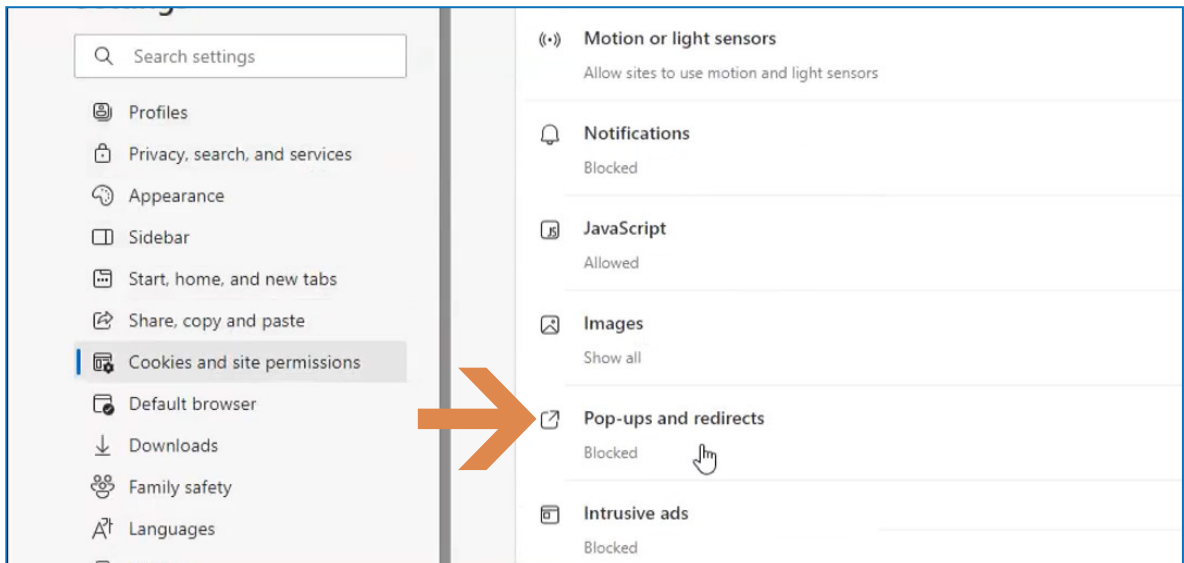


➔ NEED HELP? CONTACT THE SBS HELP DESK • SBSHELP@NAIC.ORG • 816-783-8990



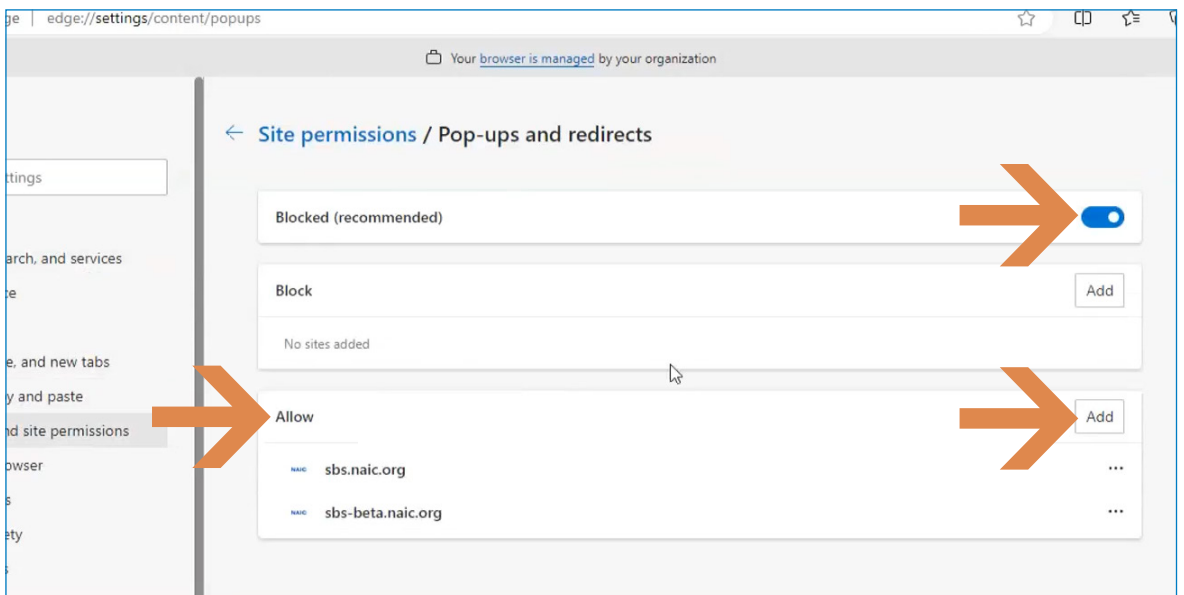
3 Pop-ups and redirects

Scroll down to the Pop-ups and redirects field and select it.



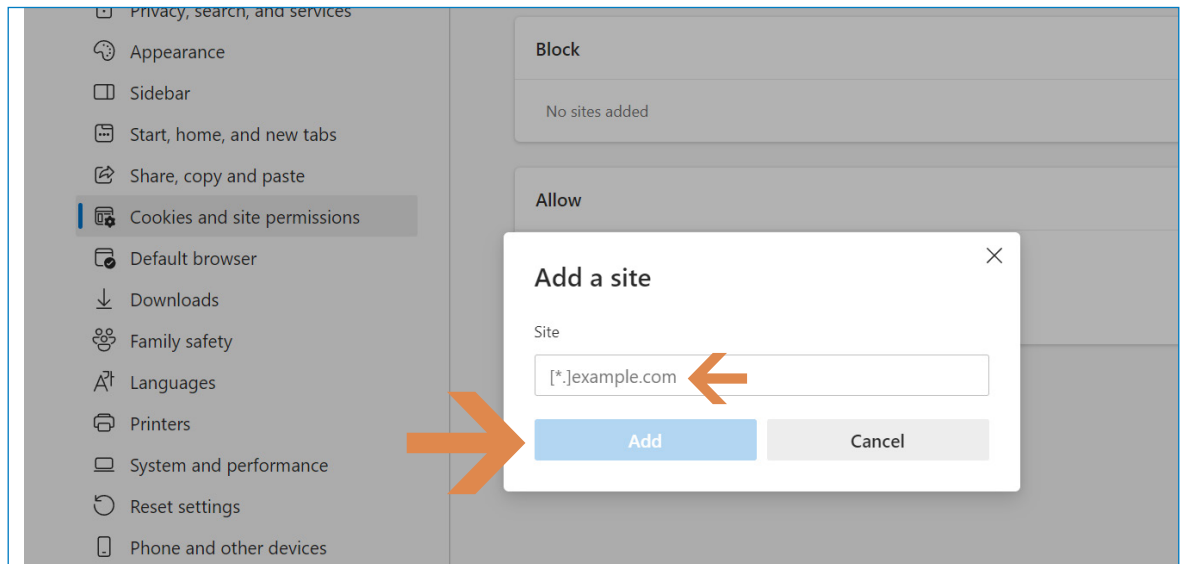
4 Allow Pop-ups

Under Site permissions/Pop-ups and redirects, choose the preferred setting for Pop-ups. You may deny general Pop-ups but allow them on SBS sites. It is necessary to allow pop-ups on SBS sites for the sites to perform as designed. Under Allow, click the Add button.



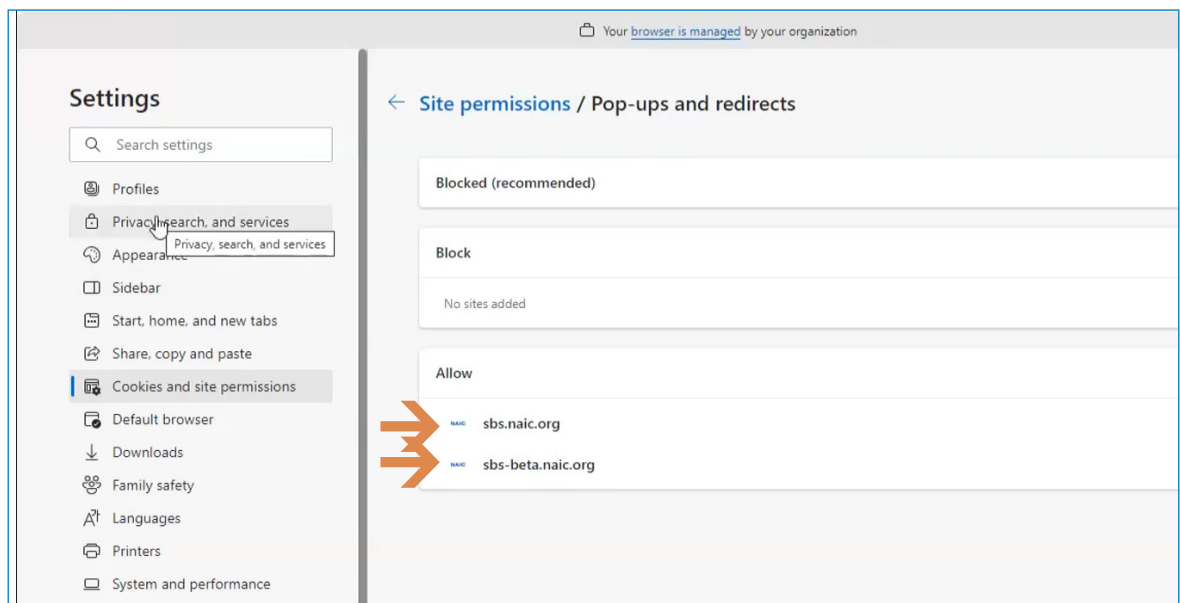
5 Add SBS urls

An Add a site box will open. Enter the SBS urls, sbs.naic.org and sbs-beta.naic.org, in the Site field. It is necessary to use these exact urls. Click the Add button.



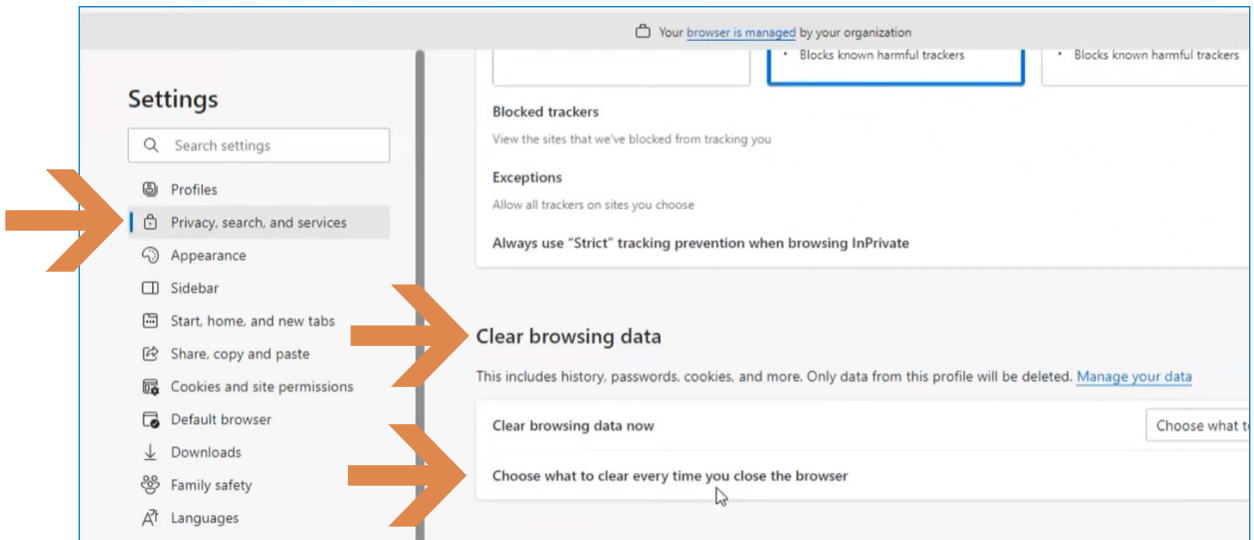
6 Site Settings

Below the Site permissions/Pop-ups and redirects screen is shown as it appears after the SBS urls have been added as an exception to allow pop-ups and redirects.



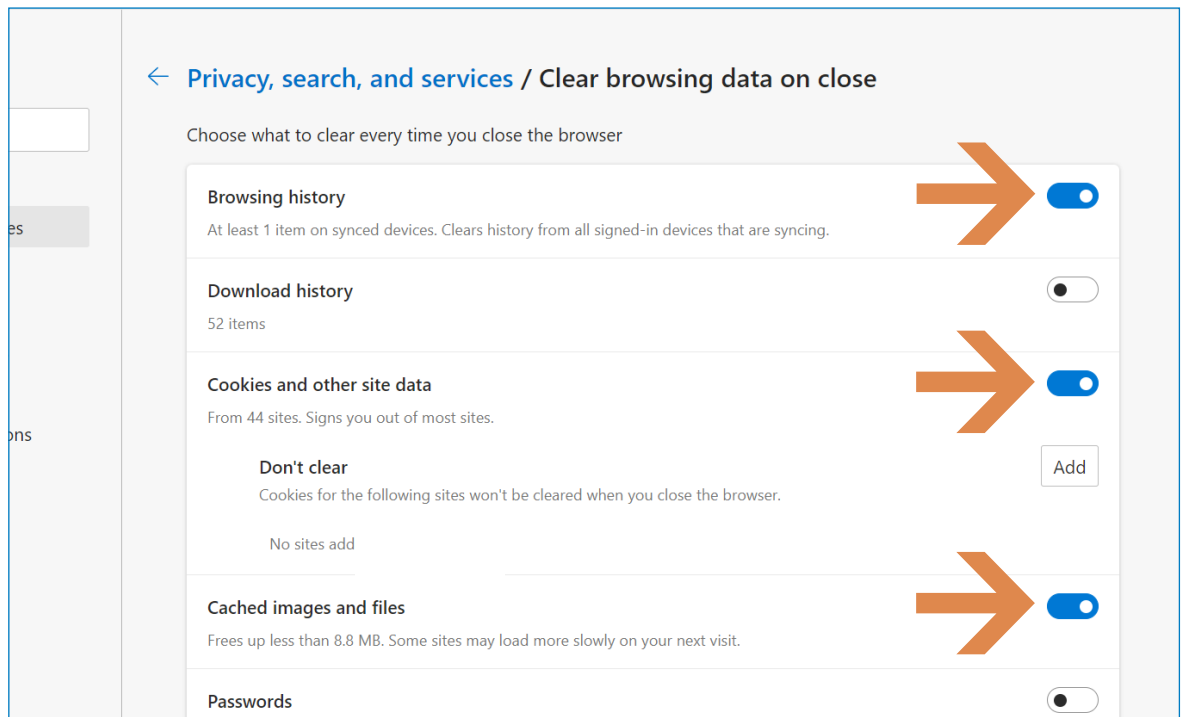
7 Clear browsing data

Under Settings select Privacy, search and services. Scroll down to Clear browsing data. Choose what to clear every time you close the browser.



8 Clear browsing data options

A window will open to allow options for Clear browsing data. Select all three of the options offered as shown below. This allows all data to load properly each time.



→ SBSHELP@NAIC.ORG • 816-783-8990